



Spring into the Season at  
Circle Haven this Month!

---

# UPCOMING EVENTS

**First Friday Social Club is  
this Friday, April 3rd!**

Circle Haven Present's  
**FIRST FRIDAY**  
**SOCIAL CLUB**

**6-7<sup>30</sup> PM**

**FIRST FRIDAY OF THE MONTH**

**\$25 ENTRY**

Games      Crafts  
Music      Movies      Karaoke  
Dancing      Snacks

CONTACT EMILY TO JOIN THE FUN!  
EMILY.PERRY@CIRCLEHAVEN.ORG

COMMUNITY ENRICHMENT CENTER  
12 GIRARD RD S, GLASSBORO, NJ

Join us this Friday as we explore the Netherlands with a make your own paper tulip project, and a rhythm and movement activity!

Come start the month with a night of friends and fun at the Community Enrichment Center!

Email Emily at [Emily.Perry@circlehaven.org](mailto:Emily.Perry@circlehaven.org) to RSVP today!

---

## Caregivers Night: Spring Series

Join us this spring for our Caregivers Night series!

From candle making to cupcake bouquets and a relaxing meditation workshop, there's something new to try this April, May, and June!

Space is limited, email Kathleen today to reserve your spot!

[Kathleen.Nace@circlehaven.org](mailto:Kathleen.Nace@circlehaven.org)

CIRCLE HAVEN'S SOCIAL CLUB PRESENTS:

# Caregivers Night

Pay What You Wish  
Donation Event

## Candle Making Workshop

Monday, April 20<sup>th</sup> 6-7<sup>30</sup> PM

Create your own scented candle! Two 6 oz vessels provided; recycled containers encouraged!

## Cupcake Bouquet Workshop

Monday, May 18<sup>th</sup> 6-7<sup>30</sup> PM

Learn to pipe buttercream flowers and turn cupcakes into a stunning edible floral bouquet!

## Music & Meditation Workshop

Monday, June 15<sup>th</sup> 6-7<sup>30</sup> PM

Join us for relaxing evening of soothing sounds and mindful meditation.

Need support during the workshop?  
Supervised activities available during events!  
\$25 per person

Space is limited! Sign Up Today  
Contact Kathleen to RSVP!

[Kathleen.Nace@circlehaven.org](mailto:Kathleen.Nace@circlehaven.org)

# NEW CLASSES

Here are some of the newest classes at the  
Community Enrichment Center!

Animals in Art – Mondays at 3pm

This class explores how animals have been represented across cultures, time periods, and artistic styles, from early cave drawings to folk art, myth-inspired creatures, and modern interpretations. Through visuals, discussion, and hands-on projects, students will see how materials, techniques, and cultural beliefs shaped animal art around the world

### **Monsters in Media – Tuesdays at 1pm (Virtual)**

This virtual class explores how monsters, from classic legends to animated favorites, are portrayed in TV, cartoons, and movies. Students will enjoy clips, discussion, and creative activities while learning how monster stories evolves over time.

### **New! Cardio Drumming – Tuesdays at 4pm**

Explore acting and performance in this interactive class! Through role-play, improvisation, movement, and group games, participants build expression, social skills, collaboration, and multi-step thinking, culminating in a mini-performance to showcase their scenes.

### **New! Intro to Theater – Tuesdays at 6pm**

Explore acting and performance in this interactive class! Through role-play, improvisation, movement, and group games, participants build expression, social skills, collaboration, and multi-step thinking, culminating in a mini-performance to showcase their scenes.

### **Listening Lounge – Wednesdays at 5pm**

Pull up a seat and dive into great conversations about music! We'll bring favorite songs, learn about artists and music history, and build social confidence through friendly discussion, reflection, and shared discoveries. Each session creates space for connection, conversation, and shared appreciation of music.

### **New! Book Club – Fridays at 10am**

Join our new book club! Each week, we'll read a selected novel aloud, explore characters, plot, and storytelling techniques, and enjoy interactive discussions in a welcoming, open environment.

### **New! Creative Writing – Fridays at 11am**

Express yourself in this inclusive creative writing class! Write stories, poems, journals,

and personal narratives at your own pace in a supportive, encouraging environment, No experience needed!

# GROUP CLASSES

at Circle Haven's  
Community Enrichment Center  
12 Girard RD S Glassboro, NJ



circlehaven.org

SPRING 2026

## MON

12pm- Limitless Beats  
1pm- Delicious Discoveries  
2pm- Art Lab  
3pm- Animals in Art **NEW**  
3pm- Cook & Conquer

## TUES

10am- Cardio & Karaoke  
1pm- Supported Chefs  
2pm- Craft Works  
3pm- Limitless Beats  
4pm- Delicious Discoveries  
4pm- Cardio Drumming **NEW**  
6pm- Intro to Theater **NEW**

## WED

12pm- Art Lab  
1pm- Delicious Discoveries  
2pm- Limitless Beats  
4pm- Art Lab  
5pm- Listening Lounge **NEW**

**\$250/mo**  
for 1 class per week

— See Back for  
Class Details —

## THUR

11am- Move & Blend  
12pm- Rhythm & Connection  
4pm- Art Lab  
5pm- Cardio & Karaoke  
5pm- Art Lab

## FRI

10am- Book Club **NEW**  
11am- Creative Writing **NEW**

## VIRTUAL

**TUES** 1pm- **Monsters in Media:** **NEW**  
A fun look at how monsters appear in TV, movies, and cartoons, exploring different versions, meanings, and designs through clips and discussions.

**FRI** 11am- **Who's That 'Mon?:**  
Inspired by Pokémon and their real-world and mythological origins, explore creative discussions and sketch your own imaginative creatures!

1pm- **On Air: Social & Storytelling:**  
Learn podcasting and radio hosting while developing social skills through interviews, storytelling, and creative conversations.

The opportunity for additional support staffing can be accommodated if needed.

Contact Kathleen Nace to schedule a Free Consultation and for more information!  
856-226-3647  
Kathleen.Nace@circlehaven.org

DDD/Medicaid  
Approved Provider of Goods and Services

Click Here to Download Our Spring '26 Class Schedule

Visit Our Classes Page  
for more Information!



## Art

**Animals in Art-** Uncover how animals appear in art across cultures and history! From cave drawings to modern works, we'll discuss, create, and reveal the stories and facts behind each creature. **NEW**

**Art Lab-** Explore a variety of art techniques and styles like drawing, painting, and printmaking. Perfect for discovering new creative passions!

**Craft Works-** Explore a new craft each week! From seasonal décor to paper art and upcycling, enjoy step-by-step guidance while letting your creativity shine—perfect for all skill levels.

## Healthy Choices- Movement

**Cardio & Karaoke-** Move, groove, and sing! This fun class blends simple rhythmic movement with your favorite songs, letting you enjoy music and motion at your own pace.

**Cardio Drumming-** A high-energy, full-body workout combining rhythmic drumming and aerobic movement. Use drumsticks on a stability ball to upbeat music! **NEW**

**Move & Blend-** Join our social movement group! Enjoy easy, low-impact activities and games with peers, then wrap up each class by making a fresh, healthy smoothie together.

## Healthy Choices- Cooking

**Cook & Conquer-** Gain confidence in the kitchen! In this hands-on cooking group, you'll plan, prep, and cook simple, delicious meals while building the skills to cook independently at home.

**Delicious Discoveries-** Cook delicious meals while exploring different cuisines and kitchen techniques. Perfect for preparing your next family dinner or gathering!

**Supported Chefs-** Gain confidence in the kitchen with hands-on cooking lessons and extra guidance. Practice skills, try new recipes, and enjoy tasty meals together!

## Music

**Limitless Beats-** Engage in collaborative music-making through structured activities and improvisation. Build confidence, enhance creativity, and connect with others.

**Listening Lounge-** Pull up a seat and dive into engaging conversations about music! We'll share favorite songs, explore artists and history, and build confidence through friendly discussion and discovery. **NEW**

**Rhythm & Connection-** Enhance social skills through music. Experience call-and-response songs, play instruments, and move to the rhythm while building confidence and friendships.

## Theater & Literature

**Intro to Theater-** Explore acting and performance in this interactive class! Through role-play, improvisation, movement, and group games, participants build expression, social skills, collaboration, and multi-step thinking, culminating in a mini-performance to showcase their scenes. **NEW**

**Book Club-** Join our new book club! Each week, we'll read a selected novel aloud, explore characters, plot, and storytelling techniques, and enjoy interactive discussions in a welcoming, open environment. **NEW**

**Creative Writing-** Express yourself in this inclusive creative writing class! Write stories, poems, journals, and personal narratives at your own pace in a supportive, encouraging environment, no experience needed! **NEW**



# STUDENT SPOTLIGHT

Frank truly lives up to his “Frank the Tank” nickname! He comes in ready for a full day of fun with his friends and always brings great energy to class. In music, you can hear his voice loud and proud as he sings along with the group, or see him happily banging on the drums to his favorite songs. In cooking, Frank is often the first person ready to help mix, chop, or fry, and he is always willing to jump in and help clean up and organize the ingredients when the project is finished.

In art, Frank is always ready to jump into the project of the day and explore the different mediums to find what works best for him. From colorful flowers to underwater scenes, and even recently the Philly Phanatic, Frank’s artwork is always full of personality and completely his own in both subject matter and style.



# Way to go Frank!



---

# SERVICES



**Circle Haven's** clinicians are now available to conduct assessments, including young adult transition evaluations. Led by Dr. Samantha Volpe, BCBA-D, our team brings extensive experience in adult autism support. Dr. Volpe has served as a clinical director for campus and community programs and currently oversees curriculum development for Endicott College's Master's in Applied Behavior Analysis program. She also holds a Level II Special Education teaching certificate.

## Young Adult Transition Services:

Through detailed assessment, our clinical team will identify strengths and skill deficits using evidence based curricula. The focus of these assessments will be on critical skills needed across various lifetime domains, including self-care, vocational, leisure, self-management, communication, and essential life skills.

## Functional Behavior Assessments:

We conduct comprehensive functional behavior assessments that identify the environmental factors that make challenging behavior more likely to occur, as well as the reinforcing consequences that cause challenging behavior to persist. At the completion of the FBA, our Board Certified Behavior Analysts (BCBAs) can develop a function based intervention plan, as well as recommend adaptive behaviors to strengthen skill repertoires.

## Individualized Skill-Based Assessment:

Circle Haven offers comprehensive individualized skill based assessments using a variety of evidence based curricula. Through observations and direct testing of various functional skills, our clinical team will create a detailed report. The report will include recommendations for skill acquisition programs for programming in school, community, and vocational settings.

## Assistive Technology Provider:

Circle Haven is now a DDD-approved Assistive Technology Provider. Our clinical team is able to assess individuals with communication impairments and provide data-based recommendations for appropriate assistive technology. Evaluations include analyzing preferences, fluency, and communication modalities, followed by tailored recommendations and caregiver training.

**Contact Kathleen at**  
**[Kathleen.Nace@circlehaven.org](mailto:Kathleen.Nace@circlehaven.org)**  
**or 856-226-3647 for more information.**





# Now Offering Individual Support Services

**Circle Haven's** Direct Support Professionals (DSPs) can meet an individual in their home, or in the community!



**Our highly skilled professionals can help individuals to increase independence in:**

- Activities of daily living (laundry, dishes, cooking, etc)
- Participation in community events (festivals, bowling, movies, etc)
- Grocery Shopping and Money Management
- Social Opportunities (classes, workshops, etc)

**DSPs can also provide opportunities for:**

- Companionship
- Respite
- Fun!



Contact Kathleen at  
[Kathleen.Nace@circlehaven.org](mailto:Kathleen.Nace@circlehaven.org)  
for more information

 **Circle Haven**  
[circlehaven.org](http://circlehaven.org)

## **Our First RBT Spring Training Series is Almost Here!**

Join us April 7th from 6:30–7:30pm for  
Graphing in Microsoft Excel and Google Sheets  
led by Dr. Samantha Volpe, BCBA–D

Please feel free to share this with any Behavior Specialists  
who may be interested!

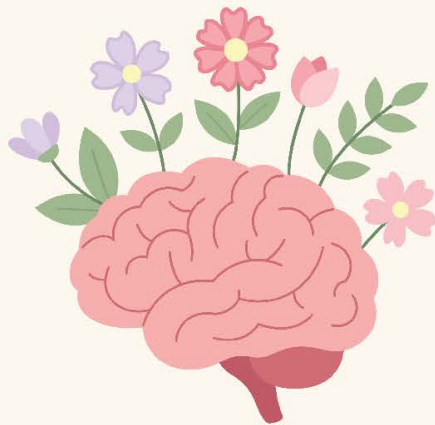
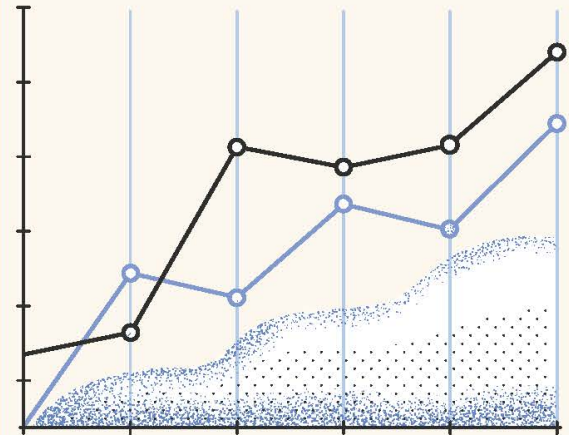
# RBT SPRING TRAINING SERIES

LED BY: DR. SAMANTHA VOLPE, BCBA-D



## APRIL 7<sup>TH</sup> - 6:30-7:30 pm Graphing in Microsoft Excel and Google Sheets

Clear, accurate graphs are essential for effective databased decision making in behavior analysis. This presentation provides a practical, step-by-step guide to creating clean, professional line graphs in Sheets and Excel. Participants will learn how to input and organize data efficiently, generate meaningful visual displays, format graphs to meet clinical standards, and avoid common errors that compromise interpretation.



## APRIL 21<sup>ST</sup> - 6:30-7:30 pm

### EST Using Antecedent Management Strategies Effectively: Preventing Behavior Before it Starts

Effective behavior support doesn't begin after challenging behavior occurs - it begins *before* it happens. This presentation focuses on the strategic use of antecedent management procedures to prevent problem behavior, increase engagement, and create supporting learning environments.

# \$5 per participant

Cost per participant - includes 1 hour PDU

[Click here to Register Today!](#)

Click Here to Register for the RBT Spring Training Series!

---

**Contact Information**

Circle Haven

\*{{Organization Address}}\*

856-226-3647

circlehaven.org



You are being sent this email because you are a subscriber.  
If you wish to update your Email Preferences or Unsubscribe, click \*{{Unsubscribe}}\*